

# HEALTH LIVES HERE

IN WISCONSIN

## FY23 Annual Report



Department of Family Medicine  
and Community Health  
UNIVERSITY OF WISCONSIN  
SCHOOL OF MEDICINE AND PUBLIC HEALTH





# Welcome



In partnership with patients, families and communities, we are transforming healthcare for all, including ourselves.

Our department brings joy and compassion to our collective work. We honor the histories of those around us while co-creating new ways of thriving for all.



Chair David Rakel, MD (left), Executive Vice Chair Jennifer Edgoose, MD, MPH (center), Chief Administrative Officer Jerome Garrett, MBA, FACHE (right).

The DFMCH was created in 1970 as one of the original 15 family medicine residency programs in the nation—and is consistently ranked in the top 10 family medicine programs. We educate medical students, residents, fellows; provide outstanding primary care; conduct innovative research; and promote healthy communities. This annual report highlights our activities from July 1, 2022, through June 30, 2023.

## ADMINISTRATIVE LEADERSHIP

Elizabeth Bingman, MS

*Educational Services Director*



Michelle Justice

*SMPH HR Services Associate Director*



Justin Knupp, MBA

*IT Director*



Stacey Lansing, JBA

*Communications and Events Director*



Lisa Sampson, MBA

*Research Director*



Ronald Ravel, CPA

*Financial Services Director*



Shelly Shaw, MPH

*Office of Community Health Director*



Shirwin Yeung, MBA, PMP, CSM

*Strategic Initiatives Director*



Judith Castro-Romaker

*Administrative Manager*



## FY23 KEY FACTS

### OUR PEOPLE:

**170** staff, **204** faculty, **211** clinical adjunct faculty, **9** new faculty, **13** faculty retirements/departures, **7** faculty promotions.

### LEARNERS:

**447** UW SMPH students taught, **164** residents in training (at sponsored and academic partner sites), **54** residents graduated; **36 (67%)** entered practice or fellowships in Wisconsin.

### PATIENT CARE:

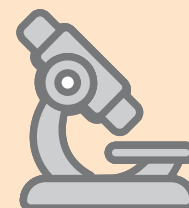
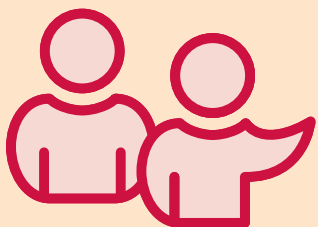
**403,901** patient visits at 17 clinics; **231,298** total patient panel.

### RESEARCH:

**\$6.7 M** in grant awards.

### FINANCIALS:

**\$99.7 M** in revenue.





Dear Friends,

I'd like to express my immense pride in the Department of Family Medicine and Community Health (DFMCH) as we reflect on the achievements of the past year. Our extraordinary faculty and staff have been the driving force behind our continued success.

In FY23, DFMCH provided care for an impressive 403,901 patient visits across our 17 statewide clinics. This commitment to patient well-being is at the heart of our mission, and we are dedicated to continually improving the quality of care we offer.

Our educational endeavors remain a top priority, notably:

*Primary Care Providers:* Of the 54 residents who graduated from our sponsored and academic partner programs in 2023, 67% chose to practice or pursue fellowships right here in Wisconsin.

*National Recognition:* The US News & World Report ranked our Madison Residency Program as the ninth best nationally. This recognition underscores the excellence of our training programs.

*Teaching Future Physicians:* We had the privilege of educating 447 students from the UW School of

Medicine and Public Health. These bright minds represent the future of healthcare in our state.

Our recent move to 610 Whitney Way in Madison signifies a new chapter for DFMCH. Here, our administrative and research teams collaborate to advance medical knowledge. Our researchers have secured over \$6.7 million in grant awards, supporting critical work in areas such as pain management, breast cancer screening, opioid misuse prevention, substance abuse, wellness, and respiratory disease surveillance. These projects align with the principles of Salutogenic Science, exploring how complex systems achieve health and resilience.

To our dedicated faculty and staff: Your skill and unwavering commitment drive our success. We recognize that our work depends on you, and we are grateful for your contributions.

As we look ahead, DFMCH remains steadfast in its mission. We will strengthen educational partnerships, enhance patient care, expand our research initiatives, and continue to serve our community. Because health lives here, in Wisconsin.

*David Rakel, MD*

*Chair, UW Department of Family Medicine and Community Health*

# Year in Review



## JULY

- 66 residents enter our statewide sponsored and academic partner programs.

## AUGUST

- DFMCH celebrates 50 years and forward after festivities were delayed in 2020 due to COVID-19.

## NOVEMBER

- **Arthur Kaufman, MD**, presents the Farley Visiting Professor Lecture.

## DECEMBER

- DFMCH named official home of new Osher Center for Integrative Health at UW.
- Self-rooming becomes permanent practice at UW Health Primary Care clinics due to pioneering efforts of **Sandra Kamnetz, MD**, and **Edmond Ramly, PhD, MS**.

## MARCH

- Over one-third of the 153 UW School of Medicine and Public Health graduates match into primary care programs nationwide with 10% specifically choosing family medicine.

## APRIL

- **Dr. Bret Benally Thompson** gives keynote address about indigenous health at the McGovern-Tracy and Student Scholars reception.

## MAY

- **Jennifer Edgoose, MD, MPH**, receives Presidential Citation from the Wisconsin Medical Society.

## JUNE

- **Ronni Hayon, MD**, receives UW School of Medicine and Public Health Dean's Teaching Award.





## MEDICAL STUDENT EDUCATION

From coursework to special programs to hands-on mentoring, the DFMCH's Office of Medical Student Education (OMSE) teaches students through all four years of their education at the University of Wisconsin School of Medicine and Public Health.

We are grateful for the efforts of our dedicated family medicine faculty and staff, and especially our statewide network of community-based clinical adjunct faculty.

### LEADERSHIP

**Mark Beamsley, MD**

*Director of Medical Student Education*



**Christa Pittner-Smith, MD**

*Director of Phase 1 Preceptor Program*



**Lauren Mixtacki, MD**

*Director of Internship Preparation Course*



**Jake Bryan, MD**

*Faculty Director for the Family Medicine Interest Group*



### ADJUNCT FACULTY SPOTLIGHT

**Dr. Melissa Lucarelli, MD, FAAFP**, is the director of the Randolph Community Clinic in Randolph, WI. A leader in her community, she has served many roles, such as chief of staff at MMC-Beaver Dam Community Hospital, providing medical advising to the local school district, and identifying approaches for care during the COVID pandemic. In addition to her strong community connections, she has been involved with academics statewide as a member of the WI Research and Education Network (WREN) and has precepted many SMPH MD and PA students. Students recognize Dr. Lucarelli for her enthusiastic and skillful teaching. She consistently receives outstanding evaluations, as captured in this student's comments: "My experience with Dr. Lucarelli at the Randolph Clinic staff was beyond exceptional. Working with her and the staff provided me with a unique experience in a small-town family medicine clinic. During my time there, Dr. Lucarelli constantly engaged me with insightful questions, frequent teaching moments, and immersed me in all aspects of family medicine." Our department and the UW are indebted to Dr. Lucarelli for her role-modeling of family medicine and community engagement, and we are fortunate to have her as an adjunct faculty member. Thank you, Dr. Lucarelli!



### FY 23 KEY FACTS

**Office of Medical Student Education taught:**

- 142 Phase 1 students
- 95 Phase 2 students
- 117 Phase 3 students



**Match Day 2023** set another record for students choosing family medicine residencies. **David Miller** (left) and **Briana Krewson** celebrate joining the DFMCH residency class of 2026.

# Education



## RESIDENCY EDUCATION

Nationally recognized for its educational excellence, the DFMCH prepares residents to practice full spectrum family medicine, with particular attention to health promotion within their communities. Each residency program has full accreditation status, and six sites have received osteopathic recognition, an educational designation from the Accreditation Council for Graduate Medical Education (ACGME).

### FY 23 KEY FACTS

- 164 residents
- 54 graduate in 2022
- 36 (67%) enter practice or fellowship in Wisconsin

PROGRAM	NUMBER OF RESIDENTS
<b>DFMCH-SPONSORED RESIDENCY PROGRAMS</b>	
Baraboo Rural Training Track*	6
Madison*	48 (at 4 continuity clinics)
<b>ACADEMIC PARTNER RESIDENCY PROGRAMS</b>	
Eau Claire/Augusta*	16
La Crosse*	18
Lakeland RTT	12
Milwaukee*	36
Waukesha	20
Wausau	15
<b>Total</b>	<b>171</b>

*\*Site has received osteopathic recognition*

## LEADERSHIP

Vice Chair for Education: **William Schwab, MD**



### MADISON RESIDENCY

Director: **Ildi Martonffy, MD**



Associate Director: **William Michael, MD**



Associate Director: **Thomas Hahn, MD**



### BARABOO RURAL TRAINING TRACK

Director: **Stuart G. Hannah, MD**



Assistant Director: **Elizabeth Lownik, MD**



**Madison Residency Class of 2023** celebrates graduation.



A few **Madison Class of 2024** residents enjoy the view from the SSM Health St. Mary's Hospital rooftop.

# Education



## FELLOWSHIP EDUCATION

The DFMCH sponsors several fellowship programs to help family physicians and PhD scientists further meet their career goals. In addition to individual mentoring, the fellowship program sponsors weekly seminars, biannual symposia, and additional educational opportunities.

### FY 23 KEY FACTS

- 12 fellows receive specialty education
- Primary Care Research Fellowship receives renewal of the HRSA Ruth L. Kirschstein NRSA Research Training Grant. The grant, in year three of five, was renewed for \$500,000; the total award over five years is \$2.5 million.

## LEADERSHIP



**ACADEMIC FELLOWSHIP**  
Director: Melissa Stiles, MD



**ADDICTION MEDICINE FELLOWSHIP**  
Director (left): Randall Brown, MD, PhD, FASAM  
Associate Director (right): Kellene Eagan, MD



**INTEGRATIVE HEALTH FELLOWSHIP**  
Director: Vincent Minichiello, MD



**LGBTQ+ HEALTH FELLOWSHIP**  
Director (left): Elizabeth Petty, MD  
Co-Director (right): William Schwab, MD



**SPORTS MEDICINE FELLOWSHIP**  
Director (left): David Bernhardt, MD  
Associate Director (right): Kathleen Carr, MD



**PRIMARY CARE RESEARCH FELLOWSHIP**  
Co-Director (left): Bruce Barrett, MD, PhD  
Associate Director (right): Elizabeth Cox, MD, PhD



Associate Director (left): David Feldstein, MD  
Co-Director (right): Earlise Ward, PhD, MS





# Patient Care



The DFMCH cares for patients at 17 clinics throughout Wisconsin. All clinics offer a full range of family medicine services:

- Comprehensive healthcare for patients of all ages
- Acute and chronic illness
- Obstetrics
- Preventive health services, including family planning
- Minor surgery
- Special services, such as geriatrics, substance misuse, mental health, sports medicine, osteopathic manipulation, and integrative medicine

## FY 23 KEY FACTS

- 17 statewide clinics: 4 residency, 10 community, 3 regional
- 403,901 total patient visits; 231,298 total patient panel

## LEADERSHIP



Vice Chair for Clinical Care  
Russell Lemmon, DO

## HIGHLIGHTS

### WISCONSIN EATS HEALTHY: A GROWING EFFORT TO IMPROVE HEALTH AND HOPE

Dr. Brian Arndt, a physician at the UW Health Verona Clinic, believes access to fresh produce is crucial to treating and preventing nutrition-related chronic conditions. He has worked with the Madison Area Food Pantry Gardens (MAFPG) since 2007 to provide people living with nutrition



Brian Arndt, MD

insecurity access to high quality, fresh, and culturally relevant produce. Over the years, Arndt has inspired a shared vision to ensure “Wisconsin EATS Healthy” (Enhanced nutrition security for all, Amplified partnerships and collaboration, Transformed regional food system, Sustainable practices and economic stability). Numerous partners have influenced the evolving vision and helped inspire the development of his DFMCH food is medicine website. The website emphasizes increasing access to local produce, providing healthy snack and meal planning ideas, and linking clinicians and their patients at the point of care to resources including FoodShare, nutrition incentive programs such as Double Dollars, and insurance benefits related to food is medicine such as medically tailored meals for patients with congestive heart failure.





## Gender Services Clinic Seeks to Improve Health Equity

The UW Health Gender Services Clinic (GSC) represents a crucial step in promoting health equity for LGBTQIA+ individuals in the community who have traditionally been marginalized in areas of physical and emotional health rooted in complex systems of stigmatization and oppression. It is a true multi-disciplinary clinic where patients can access a full array of coordinated clinical services in an environment that is inclusive, welcoming, and affirming of each person's gender identity. The centralized clinic increases access for patients throughout Wisconsin and from all over the country.



The GSC offers 11 different specialties, in three different clinic sessions, with six to seven different specialties in each session. For example, a single patient may receive consults with behavioral health, endocrinology, ENT facial plastics, family medicine, plastic surgery, and speech/voice in one location on the same day instead of over several separate appointments. New patients work with GSC registered nurse navigators to complete a comprehensive intake assessment and follow up at their provider's home clinic. In addition to providing high quality direct patient care, the GSC will help train the next generation of affirming clinicians by offering training and educational opportunities.

## Belleville Community Health Project Expands Partnerships to Serve Community

The Belleville Community Health Project (BCHIP) started as a partnership with DFMCH to improve the physical and mental health of Belleville residents. It has grown to provide services like the Belleville Community Assistance Program (BCAP), a fund that directly supports families who have emergency needs for housing, utilities and food and provides referrals for financial, health and wellness, and mental health services.



BCHIP also partners with non-profit organizations, civic agencies (public health, public schools, public safety), healthcare agencies and individuals to develop and expand programming to address health issues that are directly impacting residents, like mental health and affordable housing.

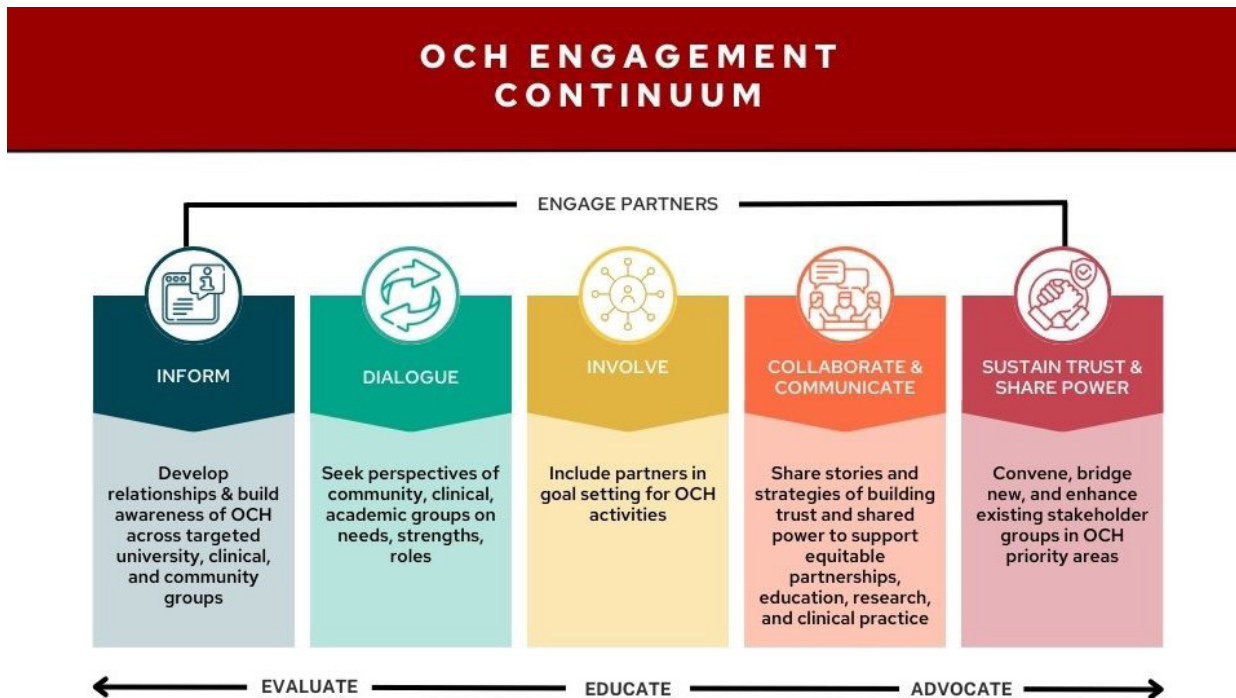
# Community Health



The Office of Community Health provides backbone support to the Department of Family Medicine and Community Health and partners working on community and health equity centered initiatives. The OCH works to build and support transdisciplinary teams in order to advance health equity centered projects in our community.

**Mission:** To braid together the wisdom of community partners, family physicians, and scholars in pursuit of health equity.

**Vision:** We will be a department that builds and sustains trusting partnerships alongside community partners, family physicians, and scholars to enable all to be thriving.





# Community Health



**Jennifer Edgoose, MD, MPH (she/her)**  
Executive Vice Chair and Vice Chair for Community Health,  
Diversity, Equity, and Inclusion



**Maddie Batzli (they/them)**  
LGBTQ+ Health Equity Coordinator



**Shelly Shaw, MPH (she/her)**  
Director, Office of Community Health



**Hazel Behling (she/they)**  
Rural Health Equity Coordinator



**Sarah Hohl, PhD, MPH (she/her)**  
Office of Community Health Lead Research Scientist



**Nazka Serrano (she/her)**  
Health Equity Coordinator



**Joscelin Eberle, MLS (she/her)**  
Office of Community Health Coordinator



## TOPICS

**Rural Health Equity.** Focusing on coalition building and engaging rural communities are crucial to improving health equity.

### Strategies:

- Coalition building with Belleville Community Health Improvement Project, Green County Healthy Communities Coalition, Green County United Prevention Professionals for Youth.
- Conducting an opportunity assessment to develop a community-engaged approach to agenda setting.
- Supporting DFMCH faculty focused on rural health research and education.

**LGBTQ+ Health Equity.** Researching and building situational awareness of the key strategies in advancing LGBTQ+ health in Wisconsin are the building blocks to advance care.

### Strategies:

- Developing a platform to educate healthcare and research teams on LGBTQ+ care.
- Strengthening collaborations to provide care and resources that address medical needs and social determinants of health.

**Advancing Community Health Worker's (CHW) Capacity in Wisconsin.** Building CHW capacity, power, and trusting relationships with physicians are essential to building a sustainable CHW workforce in Wisconsin.

### Strategies:

- Supporting and convening the Dane County CHW Collective.
- Advancing Dane County objectives of a WI Department of Health Services COVID 19 grant.
- Supporting opportunities for DFMCH Physicians and CHWs to advance partnerships.

**Food is Medicine.** Planning and implementing collaborative projects to support nutrition security.

### Strategies:

- Implementing DFMCH small grant Food is Medicine in a Diabetes Group Medical Visit.
- Obtaining funding for Research Forward Grant.
- Obtaining funding for Screening Grant.

**Integration of Public Health and Primary Care.** Integration of public health and primary care is a key strategy to advancing health equity.

### Strategies:

- Successfully launched WI Public Health Forward in partnership with WI Division of Public Health, WI Association of Local Health Departments and Boards, and UW Population Health Institute.
- Concluding and determining sustainability strategy for Healthy Community Deliberative Dialogue Pilot.
- Connecting DFMCH strategies to public health initiatives.

**DFMCH Community-Centered Infrastructure.** Supporting topic areas and projects in the OCH through tracking metrics and measures and developing narratives to champion this work.

### Strategies:

- Monitoring community engagement of the OCH.
- Establishing opportunity for DFMCH Researchers to work with WINRS/ CARDS Community Advisory Boards.
- Partnering with education team to develop a project charter for Patient Advisory Councils in four residency clinics.
- Supporting DFMCH DEI strategies.
- Continuing to partner with SMPH and campus colleagues on advancing community-centered fiscal capacity building.



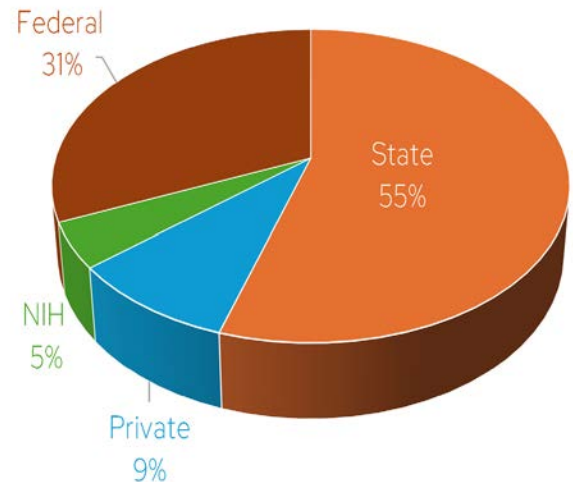
# Research



The UW Department of Family Medicine and Community Health has a robust family medicine research program. Our investigators aim to transform family medicine through inquiry, discovery, and implementation.

## FY23 KEY FACTS

- \$6.7 million in grant awards
- 35 grants submitted
- 30 funded external grants
- 27 funded internal and collaborative grants



## LEADERSHIP

Vice Chair for Research: **Bruce Barrett, MD, PhD**

Director of Research Operations: **Lisa Sampson, MBA**

## TOP FUNDED EXTRAMURAL GRANTS

PRINCIPAL INVESTIGATOR	GRANT TITLE	FUNDING SOURCE	TOTAL AMOUNT
Bruce Barrett, MD, PhD	STAMP (Strategies to Assist with Management of Pain)	PCORI	\$9,229,064
Bruce Barrett, MD, PhD	Nasal Steroids, Irrigation, Antibiotics and Subgroup Targeting for Effective Management of Sinusitis	PCORI	\$2,720,354
Andrew Quanbeck, PhD	Promoting the implementations of clinical guidelines for opioid prescribing in primary care using systems consultation	NIH/NIDA	\$3,800,000
Andrew Quanbeck, PhD	Integrating mHealth for Alcohol use disorders in clinical practice	NIH/NIAAA	\$3,700,000
Jon Temte, MD, MS, PhD	Oregon Child Absenteeism due to Respiratory Disease Study (ORCHARDS-3)	CDC	\$3,817,074



## Rachel Grob Heads Qualitative and Health Experiences Research Lab

A new diagnosis or complicated chronic illness can leave patients and families feeling anxious, worried, and confused when navigating the health care system, insurance companies, and care options. These all- too-common aspects of health care deserve thoughtful, patient-generated solutions



for improvement. **Rachel Grob, MA, PhD**, believes qualitative research holds the key to advancing quality patient-centered care, and is working to ensure actionable ideas for change are prioritized. As the inaugural director of the new DFMCH Qualitative and Health Experiences Research Lab, Grob and her colleagues and collaborators will design innovative initiatives to promote evidence-based health care system change. One initiative already underway is to adapt the Experience-Based Co-Design (EBCD) method for placing patients' diverse experiences at the center of care improvement to enhance primary care for long COVID patients who struggle, along with providers, to understand long COVID and its social impact. Grob will also devote time to securing grant funding, mentoring, publishing, and participating on expert panels and committees.

## Nasal Steroids, Irrigation, Antibiotics and Subgroup Targeting for Effective Management of Sinusitis: \$2.4 Million Grant from PCORI

Acute rhinosinusitis (ARS) is a leading cause of antibiotic use in primary care settings and antibiotics are prescribed in over 70% of outpatient ARS visits in the United States. One in seven adults are diagnosed with ARS every year (for a total of 30 million office visits) in the US, resulting in one in five adults being prescribed antibiotics. However, most patients do not benefit from antibiotics as their symptoms are caused by a viral infection.

In addition to antibiotics, nasal sprays such as intranasal corticosteroids (INCS), over-the-counter supportive treatment, or saline nasal irrigation (SNI) may help improve symptoms. The project team's goal is to improve outcomes for patients with ARS by understanding for whom antibiotics, INCS, supportive care, or watchful waiting are most likely to provide benefit. The project team hopes the information learned in this study can be used by providers and patients to figure out what is the best way to treat a patient's ARS.



*Bruce Barrett, PhD, is principal investigator for the sinusitis study.*





## THE WISCONSIN RESEARCH AND EDUCATION NETWORK (WREN)

The *Wisconsin Research and Education Network (WREN)* is a statewide practice-based research network (PBRN) of primary care clinicians and academic researchers. The vision of WREN is to improve health outcomes for the people of Wisconsin and beyond as a model practice-based research network. The WREN mission is to promote and conduct primary care research and education in partnership with primary care clinicians and the communities they serve. *WREN* is an active participant in the *UW CTSA* that promotes and conducts primary care research and education in partnership with PIs across the university, primary care clinicians and the communities they serve. A list of current and past projects is available at <https://www.fammed.wisc.edu/wren/>.

## HIGHLIGHTS

- **Sustainability.** WREN has been in continuous operation since 1987, making it one of the oldest PBRNs in the country.
- **Engagement.** WREN disseminates practical and research information to more than 1,200 persons, including clinicians, researchers, and staff across the state of Wisconsin and beyond.
- **Statewide research.** During FY23, WREN was engaged in 16 clinical and practice improvement research projects. Topics included advance care planning, long COVID experiences, eczema in newborns, antibiotic use for acute respiratory infections, barriers to mammography in rural areas, reflections on the pandemic by rural primary care physicians, and African American women's experience of menopause.
- **Funding.** WREN has continued to attract high-quality, high-caliber projects supported by federal and local funding, including private foundations.

## FY23 KEY FACTS

- More than 1,200 clinicians, staff, and trainees engaged
- 16 active and QI projects including multicenter clinical studies
- National and international collaborations through Meta-LARC

## LEADERSHIP



Medical Director  
Sarina Schrager, MD, MS



Associate Director  
Mary Henningfield, PhD



Program Manager  
Lisa Sampson, MBA

# Administration



The UW Department of Family Medicine and Community Health's operations team provides a variety of services for faculty, staff, and physicians in training. Service areas include finance and accounting, human resources, information technology, communications, clinical care, education, and research.

## OPERATIONAL ADVISORY COMMITTEE

*The Operational Advisory Committee supports the clinical, research, education, and community health missions of the department. The group serves as direct advisors to the department administrator and, through that position, as advisors to the chair and department leadership team. Decisions focus on day-to-day administrative and operational functions.*

**Sara Arscott**, Outreach Program Manager

**Shari Barlow**, Research Program Manager

**Maddie Batzli**, Health Equity Coordinator

**Elizabeth Bingman**, Director of Educational Services

**Cindy Ann Burzinski**, Researcher

**Jill Costello**, Academic Program Specialist

**Alice Delaquess**, Administrative Assistant

**Matt Fleming**, Senior IT Professional

**Jerome Garrett**, Chief Administrative Officer

**Nate Gullick**, IT Manager

**Thomas Hahn, MD**

**Mary Henningfield**, Scientist

**Michelle Justice**, SMPH HR Services Associate Director

**Justin Knupp**, IT Director



**Stacey Lansing**, Communication and Events Director

**Page Steinert**, Administrative Specialist

**Ron Ravel**, Financial Services Director

**Michelle Riley**, Financial Manager

**Megan Ringo**, Research Services Manager

**Jeanne Rotter**, Financial Manager

**Ashley Royston**, HR Business Partner

**Lisa Sampson**, Research Director

**Justin Sena**, Graduate Medical Education Coordinator

**Shelly Shaw**, Office of Community Health Director

**Julia Smith**, Administrative Specialist

**Tressa Kay Spingler**, Graduate Medical Education Coordinator

**Meagan Sulikowski**, Outreach Specialist

**Jenny White**, Graduate Medical Education Program Manager

**Madison Wynn**, Researcher

**Julia Yates**, Wellness Program Manager

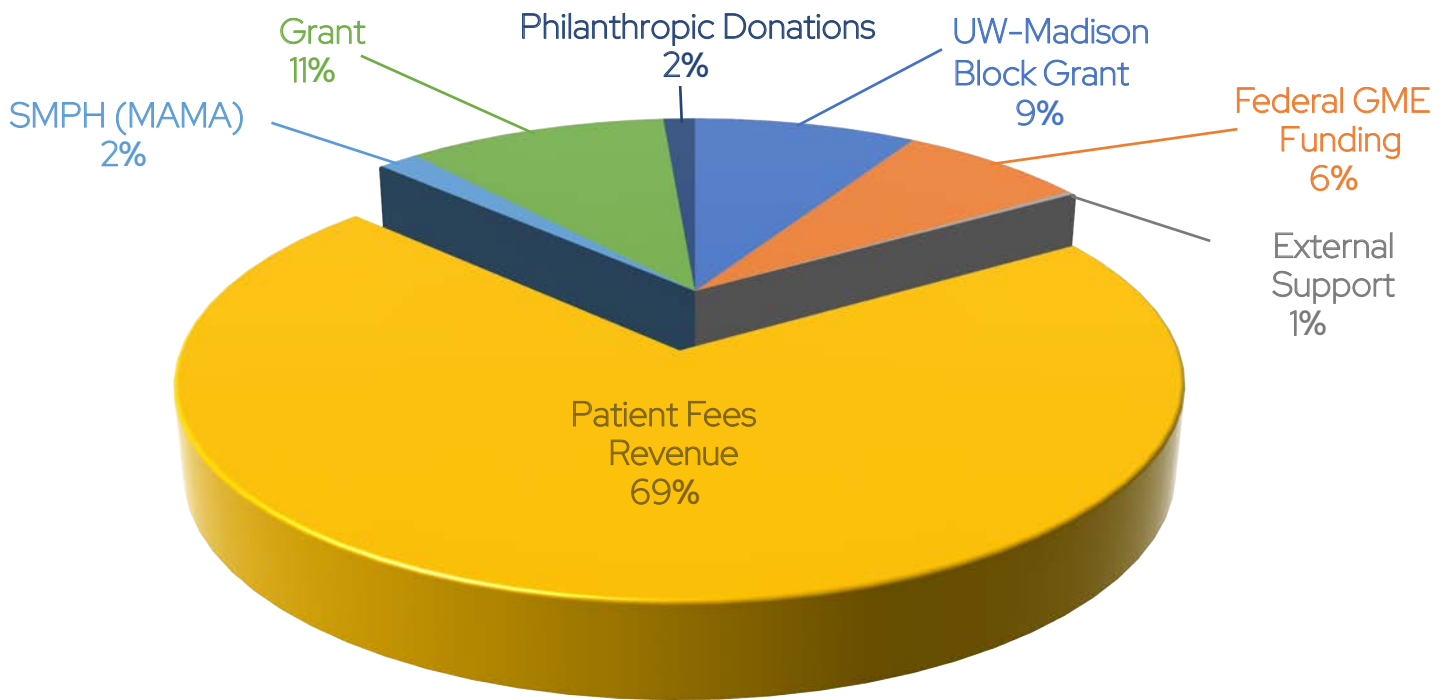
**Shirwin Yeung**, Director of Strategic Initiatives



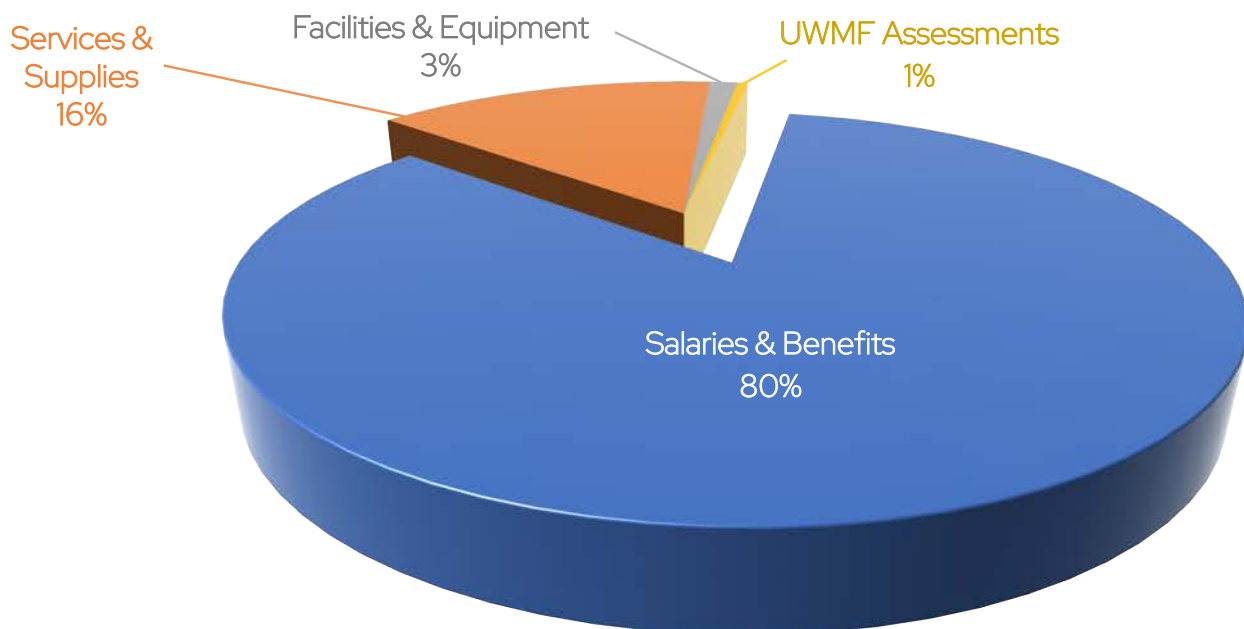
# Financials



**FY23 Revenue: \$99,748,888 million (\$97,341,105 million without philanthropic donations)**



**FY23 Expenses: \$112,871,020 million**





# Special Events



Each year, our special events bring together faculty, staff, learners, friends, and guests.

## FY23 KEY FACTS

- November 2022: Farley-Frey Dinner and Celebration
- April 2023: McGovern-Tracy and Student Scholar Awards

## EUGENE FARLEY VISITING PROFESSORSHIP

*Honors Eugene and Linda Farley and their contributions to the DFMCH and the discipline of family medicine. Its purpose is to stimulate ideas and discussion through visits by family physicians whose area of interest is in the humanistic aspects of medicine, medical ethics, social consciousness, philosophy of family medicine, healthcare reform, generalist education or cross-cultural concerns.*

DFMCH colleagues gathered at the Pyle Center to listen to a special lecture by Eugene and Linda Farley Visiting Professor Dr. Arthur Kaufman, honor Dr. Sandra Kamnetz with the Chair's Award and recognize the Frey Writing Award recipients.

Dr. Kaufman's lecture, "Reviving the Social Mission of Academic Health Centers: Beyond Flexner Alliance," addressed the significance of social determinates of health and how academic health centers can improve their community health efforts.



Arthur Kaufman, MD

## CHAIR'S AWARD

Sandra Kamnetz, MD, received the Chair's Award for her lengthy career supporting and caring for patients as well as her many years serving in administrative roles as a champion for DFMCH physicians.

Kamnetz has practiced full scope family medicine at the UW Health Yahara Clinic for over 30 years. She also served as the vice chair for Clinical Care advocating for DFMCH clinicians and acting as their ambassador to the UW System.



Sandra Kamnetz, MD



*John Frey, MD*



*Maddie Batzli*



*Melanie Biegler, DO*



*Caitlin Regner, MD*



*Maureen Goss, MPH*



*Jon Temte, MD, PhD*



*Maggie Larson, DO*

## JOHN FREY WRITING AWARDS

*Named for John Frey, III, MD, past chair of the DFMCH, these awards recognize individuals in the department for creative writing contributions and encourage creation and enjoyment of such writing.*

### Prose Winners:

- Vigil (Maddie Batzli)
- Regarding the Snow Peas (Aynsley Hartney)

### Poetry Winners:

- The Pronouncement Exam (Melanie Biegler, DO)
- Before you (Maureen Goss, MPH)
- Pieces of Wood (Maggie Larson, DO)
- The Ride (Caitlin Regner, MD)
- a million (Jon Temte, MD, PhD)



## MCGOVERN-TRACY AND STUDENT SCHOLAR RECEPTION

A celebration at UW Memorial Union's Great Hall brought together the DFMCH community for an evening filled with inspiration and fellowship. The annual McGovern-Tracy and Student Scholars reception offered an opportunity to celebrate students, faculty and staff who exemplified the values of leadership and community service modeled by the event's namesakes, Michele Tracy and Elizabeth McGovern Kerr. Tracy was a UW medical student tragically killed in an accident while serving a medical mission in Malawi, and McGovern Kerr was from a family of physicians who were some of the first to serve urban and rural families in Wisconsin.

This year's keynote speaker was Dr. Bret Benally Thompson, a member of the White Earth Nation of Ojibwe. Before beginning his talk, "Indigenous Health: History and Future," he shared the unique connection he has with Michele Tracy through Dr. Tom Nighswander, his preceptor and mentor in Alaska. Nighswander served in the Peace Corp in Malawi and returns each year to help in the Malawi Children's Village. Tracy and her group helped construct one of the buildings in the village where there is a plaque displayed in her honor. According to Benally Thompson, Nighswander and Tracy are strong examples of people who spent their lives in service to others.



*Dr. Bret Benally Thompson gives the keynote address.*



*DFMCH Chair David Rakel (left) presents Dr. Bret Benally Thompson with a painting titled "We Heal You" from an Ojibwe artist.*





*McGovern-Tracy Scholars, first row from left: Estefan Beltran, MD, Yusuf Abdullah, DO, Melissa Ricker, MD, Samantha Busch, Aynsley Hartney (not pictured, Kali Buerkley). Tracy family, back row from left: Dan Tracy, Candi Tracy, Layla Tracy, Dera Johnson-Tracy, Brandon Tracy.*



*Colin Schuh (right) shown with Dr. Zorba Paster, receives the Compassion in Action Award endowed by Paster and his wife, Penny.*







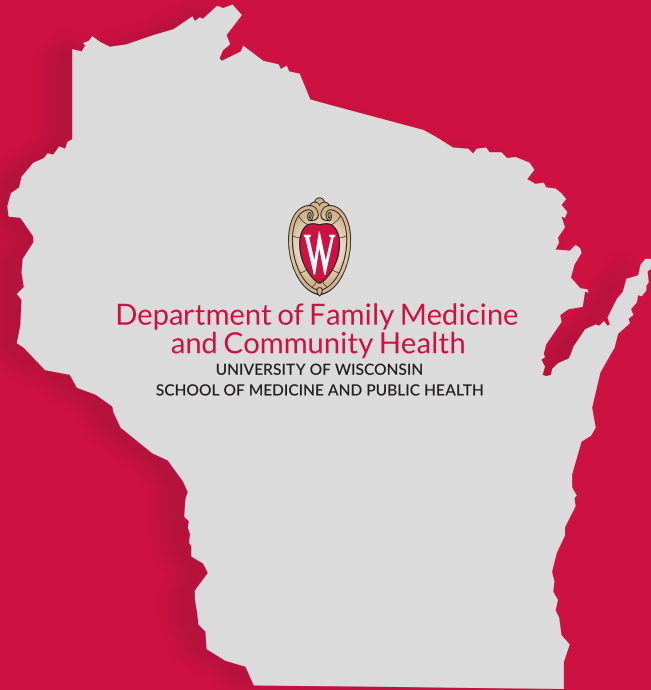
# Donor Recognition



**We are deeply grateful to the individuals and organizations below who made philanthropic donations to our department in FY23. Thank you for your contributions!**

- John and Penelope Beasley
- Blackbaud Giving Fund
- John and Mary Brill
- Marcus and Wendy Chacon
- John and Kathy Coady
- Diane and David Deci
- Shawn Doscotch
- Ann and Harold Evensen
- Valerie Gilchrist and William Scott
- Edward and Sara Gleason
- Mercedes Grandin
- Frank Grenzow
- Jeff Huebner and Christine Kirsch
- Paul Hunter and Sophie Kramer
- Daniel and Paula Jarzemsky
- David Jeardeau
- Yehuda and Sari Karsh
- Myron and Barbara Katz
- Camila Khan
- Julie Kruger and James Foley
- Kari Lathrop Capaul and Peter Capaul
- Jared Leff
- Jen Lochner and Steven Winchester
- Kenneth MacMillan
- Pamela O'Donnell
- Christa and Drew Pittner-Smith
- Eric and Cyndee Rotert
- William and Rolliana Scheckler
- Sarina Schrage and Kenneth Loving
- William Schwab and Leslie Grant
- Alan and Laurie Schwartzstein
- Geoff Swain
- Mary Thompson and Scott Greene
- Sal and Judith Troia
- Kathryn and Martin Urberg
- Kayla Vig
- Vogel Foundation, Inc.
- Katherine Wegner





Department of Family Medicine  
and Community Health

UNIVERSITY OF WISCONSIN  
SCHOOL OF MEDICINE AND PUBLIC HEALTH

